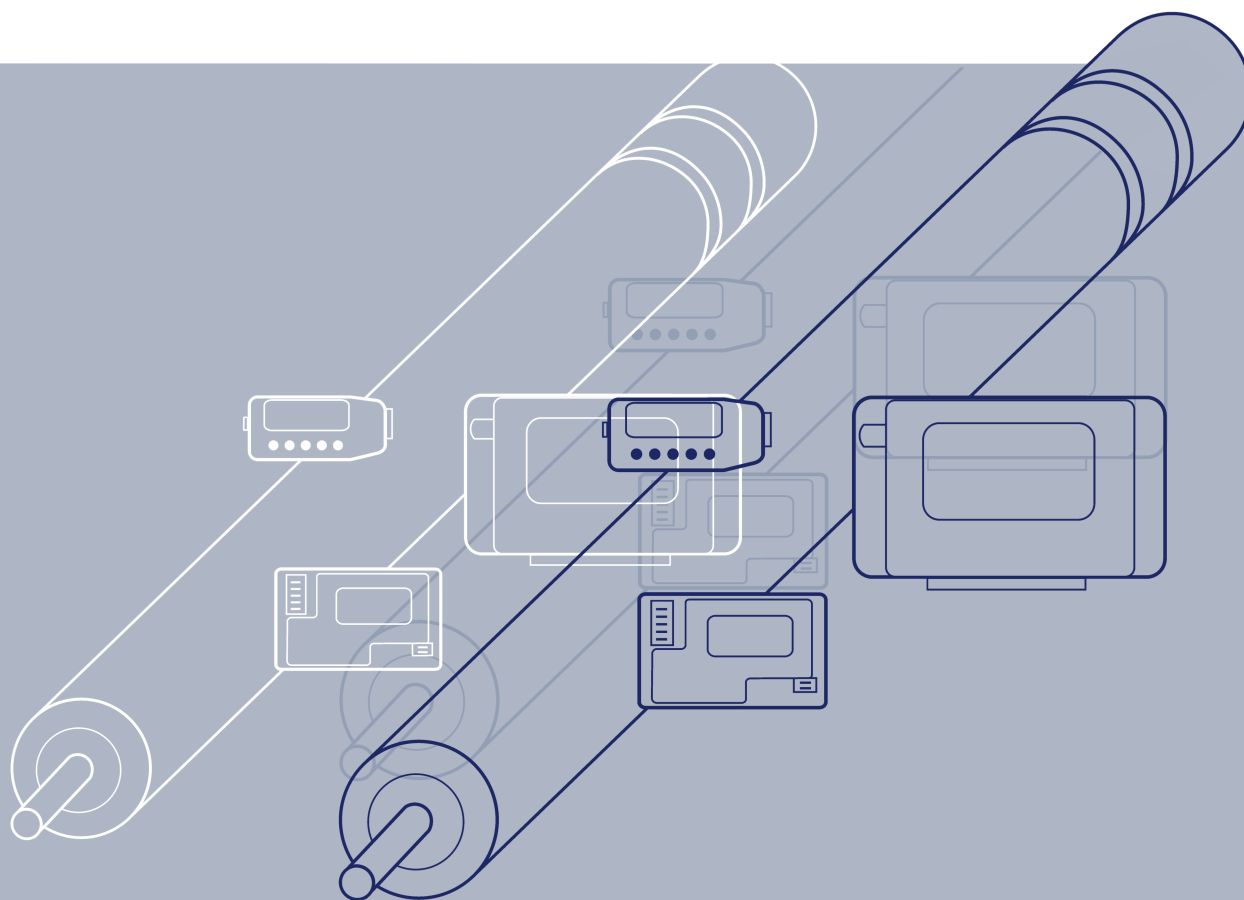




An InfiniDrive™ Motor Manufacturing Company

24 Volt DC Motor-Driven Roller



Description

The Holjeron MDR is an internally powered motor-driven conveyor roller with an amperage-protected 24 volt DC brushless motor and permanently lubricated planetary gear reduction drive.

These 24 volt DC powered motorized rollers are for plant managers and production engineers who strive to lower the total cost of ownership of their conveyor systems.

- Optimize system throughput
- Decrease installation costs
- Decrease maintenance costs
- Decrease power consumption
- Increase environmental safety



Specifications

22 Watt Motor

Gearbox	Rated Torque (in-lbs.)	Starting Torque (in-lbs.)	Current (Amps)	Linear Speed (FPM)
-5	31	72	0.5-2	10-34
-7	24	54	0.5-2	14-46
-10	14	32	0.5-2	18-62
-15	10	24	0.5-2	31-100
-20	8	20	0.5-2	41-139
-30	6	15	0.5-2	55-178
-35	5	14	0.5-2	99-219
-40	4	11	0.5-2	124-306

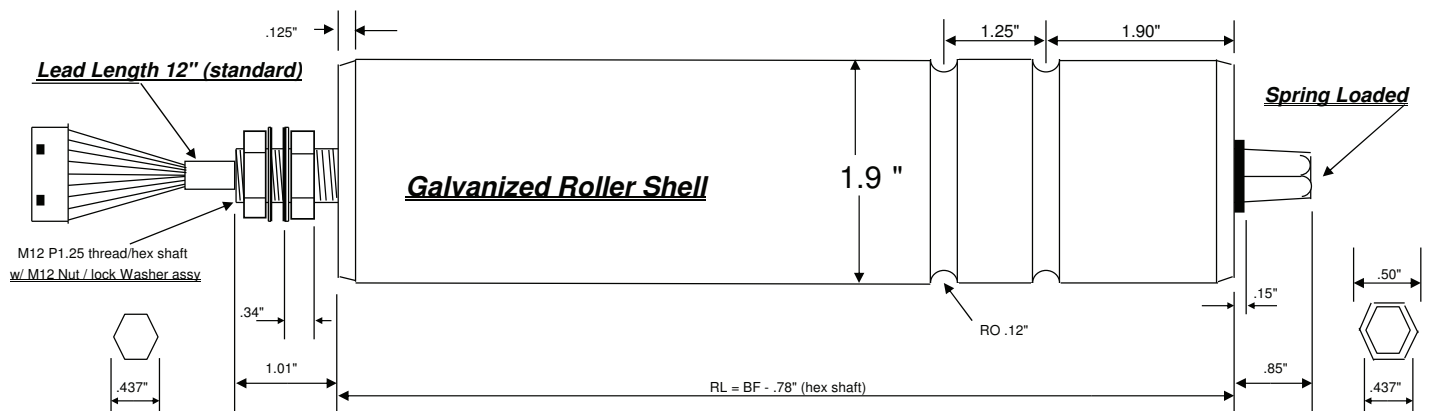
35 Watt Motor

Gearbox	Rated Torque (in-lbs.)	Starting Torque (in-lbs.)	Current (Amps)	Linear Speed (FPM)
-10	43	172	0.5-2.8	10-38
-14	32	129	0.5-2.8	13-51
-20	24	97	0.5-2.8	17-68
30	14	57	0.5-2.8	29-115
-40	11	43	0.5-2.8	38-154
-60	8	32	0.5-2.8	51-205
-70	5	18	0.5-2.8	92-369
-80	4	14	0.5-2.8	115-462

The linear speed shown is for 1.9" diameter rollers. For 2.24" diameter rollers—multiply by 1.15
For 2.38" diameter rollers—multiply by 1.22

Product Nomenclature

	Roller Type	Power Source	Diameter	Length	Gearbox	Roller Cover	Output Power	Groove Type	
PMR	-(X)	-D	-(XX)	-(XXX)	-(XX)	-(X)	-(X)	-(X)	-Q
Holjeron MDR	A=Standard B=Brake	24 VDC	(mm)	(mm)	4-80	Call for options	W=22 WATT Z=35 WATT	Call for options	N/A



Warranty/Remedy

Seller warrants its products, for 18 months after the date of shipment by Seller, to be free from defects in design, material and workmanship under normal use and service. Seller will repair or replace without charge any such products it finds to be so defective upon its return to Seller within the warranty period. **The foregoing is in lieu of all other expressed or implied warranties (except title), including those of merchantability and fitness for a particular purpose.** The foregoing is also purchaser's sole remedy and is in lieu of all other guarantees, obligations, or liabilities or any consequences incidental, or punitive damages attributable to negligence or strict liability, all by way of example.

While Holjeron provides application assistance, personally and through literature, it is up to the customer to determine the suitability of the product in the application.

All information contained herein, including illustrations, specifications and dimensions, is believed to be reliable as of the date of publication, but is subject to change without notice.

Complementary Products

Holjeron manufactures a complete line of smart conveyor control equipment. To complete your system, have you considered:

- **ZoneLink® .S ZPA Module for 22W and 35W**
Holjeron MDRs w/ Auxiliary I/O
- **ZoneLink® .S Driver Module for 22W and 35W**
Holjeron MDRs
- **Square Shell Motorized Pulleys for Modular Belting**

To request pricing and availability or to place an order:

Phone: (616) 965-9898

Toll-free: (877) 415-9898

General info: info@infinidrivemotors.com

Sales: sales@infinidrivemotors.com

Support issues: support@infinidrivemotors.com

Address: InfiniDrive™ Motor Manufacturing
2686 3 Mile Rd. NW, Grand Rapids, MI 49534 USA

About the Holjeron brand:

Our products are all designed and produced by us.

We give you the technology that best suits your needs. Our engineers can supply the distributed I/O solutions that meet your specific needs.

We push intelligence to the process

Holjeron's smart quick-connect products can reduce wiring and give you diagnostics designed for your material handling system. Our products are designed with your system in mind. Using industry standards, we explore new ways to make things work in industrial automation. We apply the requisite technology to deliver the solution your system needs.

Membership

Holjeron is an active participant in key industry organizations and standards bodies.



Holjeron is an InfiniDrive™ Motor Manufacturing Company